



2025 Employer Group Coverage (2 – 50)

Choice
Complete

New name, same accessible, affordable and complete small group benefits.



Table of Contents

- Section 1: Our Plans** 1
 - Choice Complete 2
- Section 2: Benefits and Services** 3
 - The Benefits Your Employees Deserve 4
 - Tiered Prescription Drug Benefits 6
 - Our Tiered Drug Program 6
 - All-Inclusive Office Visit Copayment 7
 - Value-Added Benefits and Services 8
 - Employee Assistance Program 8
 - Preventive Dental Care 8
 - Discounts 8
 - Vision 9
- Section 3: Health and Wellness** 11
 - FOCUSfwd® Wellness Incentive Program 12
 - Health Management Programs 13
 - My Health NovelSM 13
 - My Diabetes Discount Program 14
 - Behavioral Health Resources 15
 - My Health PlannerSM 16
- Section 4: Tools and Resources** 17
 - Find Care 18
 - Information on the Web 18
 - Telehealth Visits as Low as \$0* 19
 - Save Time and Money 20
 - QuickBillSM 20
 - QuickEnrollSM 20
 - ChoiceEnroll 20
 - HRA/HSA/FSA/COBRA 20
- Section 5: Optional Coverage Enhancements** 21
 - Blue DentalSM 22
 - Companion Life 23
 - Life Insurance 23
 - Short- and Long-Term Disability Insurance 23
 - Voluntary Vision Insurance 23
- Section 6: 2025 Plans** 25
 - Choice Complete 26
- Statement of Confidentiality** 35



Section 1: Our Plans





BlueChoice HealthPlan: Serving Small Groups Since 1984

Since 1984, BlueChoice HealthPlan has been a leader in employer health insurance in South Carolina. With a focus on accessibility, affordability and quality care, we have built an excellent statewide network of providers. We offer a variety of plans designed to meet the diverse health requirements of our members.

Your employees deserve great coverage and they can get it with BlueChoice HealthPlan.

Choice Complete

Our BusinessADVANTAGE plans have been renamed Choice Complete. You still get the same accessible, affordable and complete small group benefits with Choice Complete. They provide the most extensive benefits and access to our broadest network.

We are offering 22 Choice Complete plans:

- Eight Gold plans
- Nine Silver plans
- Five Bronze plans

Three of these are qualified high-deductible health plans.

You can offer dual options in any combination from any of these plans down to two lives. All plans are health reimbursement arrangement-compatible.

Section 2: Benefits and Services



The Benefits Your Employees Deserve

Our range of plan options is designed to offer comprehensive, whole-health solutions that cater to the well-being of your employees and their families, while also helping you manage your company's health care costs. We are dedicated to enhancing the health of our community by ensuring members receive high-quality care through coverage that meets their diverse needs.

All-Inclusive, Comprehensive Office Visit Copayment — One low copayment per in-network office visit covers all related diagnostic and treatment services, including labs and X-rays. Learn more about this benefit on page 7.

Great Expectations for health — More than 20 wellness, chronic condition management and behavioral health programs focus on the early detection of illness and the prevention of disease.

My Diabetes Discount Program — Qualifying members receive their insulin with a \$0 copayment when they meet the program criteria.

Blue CareOnDemandSM Powered by MDLIVE[®] — Virtual visits can be scheduled with a doctor any time day or night for less than \$35 on most plans.

Specialist Visits — No referral is necessary for Choice Complete members!

BlueCard® Program — Members living or traveling outside of South Carolina can locate participating doctors and hospitals nationwide. When members use a doctor or hospital through BlueCard, they receive the highest level of benefits.

Lab Choices — We offer lab choices, generating savings and less out-of-pocket costs for our members.

Free-Standing Ambulatory Surgical Centers — Our network of free-standing ambulatory surgical centers can save members money when they need surgery or a procedure that doesn't require an overnight stay.

EXAMPLE	FACILITY FEE*
Your employees use a free-standing ambulatory surgical center.	\$200
Your employees use the hospital or an outpatient facility affiliated with a hospital.	\$400 copayment, then deductible, then 50%

*Benefits vary. Groups should check their Schedules of Benefits.

Adult and Pediatric Vision — All plans include a \$0 copayment for an annual routine eye exam for adults and \$25 for children.

Preventive Dental* — This benefit covers an allowed amount per benefit period for preventive exams and cleanings at any South Carolina-licensed dentist.

Employee Assistance Program (EAP)* — Our employee assistance program can be used for family counseling, life management, training and more. The EAP is included at no additional cost through First Sun EAP. Because First Sun EAP is a separate company from BlueChoice®, First Sun will be responsible for all services related to this program.

*Any costs incurred related to these programs are not applicable to the member's deductible and/or out-of-pocket expenses.



The **FOCUS_{fwd}** Wellness Incentive Program is designed to help members lead healthier lifestyles. By completing health-related activities and challenges, members earn up to **\$110 in rewards** and increase their chances of winning one of the **\$1,000 quarterly** and **\$5,000 annual cash rewards** in our **Sweepstakes!** Just look for the running man icon throughout this brochure indicating a **FOCUS_{fwd}** initiative and its entry values.



for signing up for
FOCUS_{fwd}



Tiered Prescription Drug Benefits



BlueChoice offers pharmacy benefits programs that provide the highest level of clinical effectiveness and safety for the lowest net spending. Our goal is to help our members get the appropriate drugs they need at the best price. One way we do this is by developing and maintaining a covered drug list.

We continually evaluate our prescription drug formularies and drug management programs to ensure that quality and costs are managed effectively. We work with a group of independent doctors and pharmacists to evaluate our pharmacy programs and get their recommendations because every decision related to pharmacy coverage matters. We understand the gravity of those decisions. This group also approves decisions about our covered drug list, specialty drug list and drug management programs. They base their decisions on a drug's effectiveness, safety and value.

To view the covered drug list, visit www.BlueChoiceSC.com, go to the **Member Center** and select **Choice Complete**.

Our Tiered Drug Program

BlueChoice has a tiered prescription drug plan. This program offers flexibility in drug treatments. The chart shows the drugs that are typically in each tier.

MEMBER COST	DRUG TIER	DESCRIPTION
\$0	Tier 0	These drugs are considered preventive medications under the Affordable Care Act (ACA), and we cover them at no cost to the member.
\$	Tier 1	Drugs on this tier are usually generic drugs. They will typically cost the least amount of money out of pocket.
\$\$	Tier 2	Drugs on this tier are usually preferred brand drugs. They will typically cost less than brand-name drugs.
\$\$\$	Tier 3	Drugs on this tier are usually non-preferred brand-name drugs.
\$\$\$\$	Tier 4	Drugs on this tier are usually generic specialty drugs. They typically cost more than other brand-name drugs and may have generic equivalents.
\$\$\$\$\$	Tier 5	Drugs on this tier are usually preferred brand specialty drugs that are used to treat complex conditions. They are typically expensive.
\$\$\$\$\$\$	Tier 6	Drugs on this tier are usually non-preferred brand specialty drugs that are used to treat complex medical conditions. They are typically the most expensive drugs available.

All-Inclusive Office Visit Copayment



All plans that have a copayment give members the convenience of an all-inclusive office visit copayment. What does that mean?

Members who visit an in-network provider will pay one copayment for all covered services performed in the doctor's office for the same date when billed by the doctor. Best of all, there are no dollar maximums!

For example, let's say a member is sick and goes to an in-network doctor. The copayment for this visit is \$25. While there, the member ends up needing lab work and an in-office X-ray. With the all-inclusive office visit copayment, the member wouldn't pay any extra for these services. The chart shows how much the member would save.

SERVICE	WITH ALL-INCLUSIVE COPAYMENT	WITHOUT ALL-INCLUSIVE COPAYMENT
Office Visit	\$25	\$25
Lab Work	\$0 (Included)	\$47
In-Office X-Ray	\$0 (Included)	\$89
Total Cost	\$25	\$161
Total Savings With All-Inclusive Copayment — \$136		

Here are a few examples of what is covered under the all-inclusive office visit copayment:

- Office charges, including surgical services or treatment of an illness, accident or injury
- Allergy and tetanus shots
- Annual physicals
- Injections (immunizations)
- Diagnostic lab and X-ray services (Other charges could apply if the provider sends the claim to a hospital for processing.)



Value-Added Benefits and Services

These benefits are nonessential and do not count toward any maximum out-of-pocket (MOOP) expenses unless otherwise indicated.



Employee Assistance Program

First Sun EAP provides a broad array of services designed to help your employees be at their best. The EAP can help reduce the number of days employees miss, help increase productivity and bring out the best in your employees. These services are free to members and those in their households.

EAP services include these resources and more:

- Financial counseling and planning
- Adult care resources
- College consultation resources
- Legal consultations and documents
- Child care resources
- Parenting/adoption resources
- Individual, couples and family counseling

Members and those in their households receive **three free life management sessions and three free counseling sessions.**



Preventive Dental Care

All plans include a dental allowance per benefit period for exams and cleanings for adults and children by any licensed dentist:

- Preventive dental, one exam every six months: up to \$50
- Preventive dental, one cleaning every six months: up to \$50

Members can send a completed dental reimbursement form and the paid receipt to BlueChoice for reimbursement of the allowed amount. If you would like to offer a comprehensive dental plan, you can choose one of our Blue DentalSM plans. See page 22 for details.



*for getting
a dental exam*



Discounts

Members can take advantage of great discount programs and special services through Blue365.* We offer these services and discounts in addition to, but not included in, the services and benefits covered under a BlueChoice policy. Through our value-added services, members have access to special discounts or benefits on services such as these:

- Weight loss programs
- Hearing aid discounts
- Fitness center discounts
- Bosley[®] hair restoration**



*for signing up
for Blue365*

*The Blue365 program is brought to you by the Blue Cross Blue Shield Association. The Blue Cross Blue Shield Association is an association of independent, locally operated Blue Cross and/or Blue Shield companies.

**Bosley is an independent company that provides discounts on hair restoration services for BlueChoice members.



Vision

All plans include routine pediatric and adult vision coverage through an independent company, EyeMed.

Members have access to the right mix of in-network providers — including independent eye doctors and popular retailers such as LensCrafters®, Target Optical® and Pearle Vision®. Members can even use their benefits online at Glasses.com, ContactsDirect.com, LensCrafters.com, TargetOptical.com, Ray-Ban.com, and Oakley.com.



*for getting
an eye exam*

Pediatric Vision Care*

For children (ages 0 – 18), this includes:

- \$25 copayment for one annual routine eye exam.
- Up to \$40 for one standard contact lens fitting or 10 percent off the provider's nonstandard contact lens fitting fee per benefit year.
- \$50 copayment, then 100% coverage for provided designated frames, once every benefit year.
- 40 percent discount on complete pair eyeglass purchase and a 15 percent discount on conventional contact lenses once the funded benefit has been used.

Please note for pediatric vision, members must visit a provider in the EyeMed network to receive this benefit. Costs incurred from these services count toward maximum out-of-pocket (MOOP) expenses. These benefits are essential.**

*For dependent children until the age of 18. Adult vision care begins on the first day of the month following their 19th birthday.

**Essential benefit: A set of 10 categories of services health insurance plans must cover under the Affordable Care Act. These include doctors' services, inpatient and outpatient hospital care, prescription drug coverage, pregnancy and childbirth, mental health services, and more.



Adult Vision Care

For adults (ages 19 and over), this includes:

- \$0 copayment for one annual routine eye exam.
- Up to \$40 for one standard contact lens fitting or 10 percent off the provider's nonstandard contact lens fitting fee per benefit year.
- \$120 material allowance with \$0 copayment every two benefit years for glasses or contacts, with no limits on frame or lens selection.
- 40 percent discount on complete pair eyeglass purchase and a 15 percent discount on conventional contact lenses once the funded benefit has been used.

Please note that members must visit a provider in the EyeMed network to receive this benefit. Costs incurred from these services do not count toward MOOP expenses. These benefits are nonessential.*

To locate an in-network eye doctor, please visit www.BlueChoiceSC.com/FindCare.

*Nonessential benefit: Any benefit provided that is not considered an essential health benefit is a nonessential benefit.

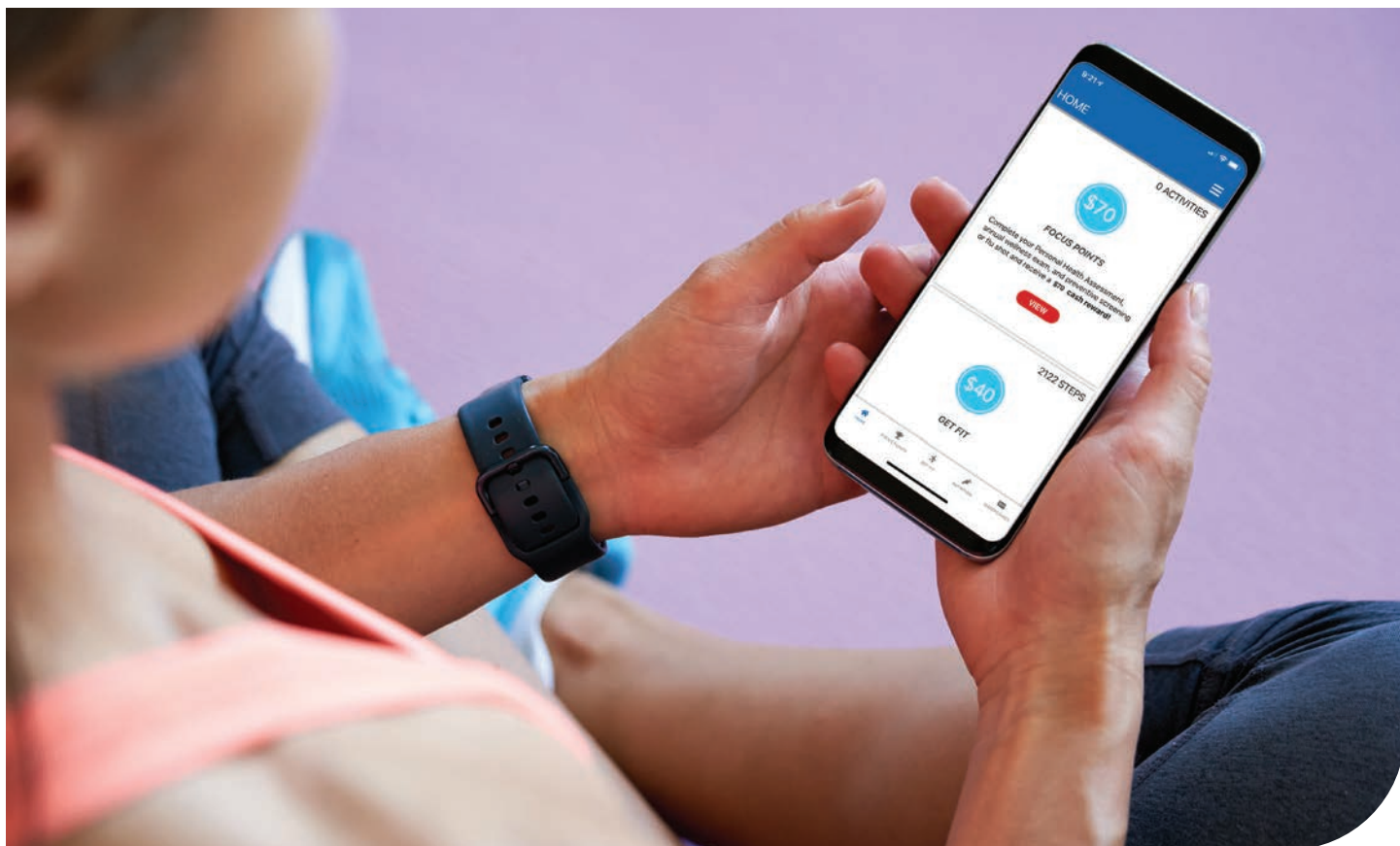







Section 3: Health and Wellness





FOCUS_{fwd} Wellness Incentive Program

 The **FOCUS_{fwd}** Wellness Incentive Program is designed to help members lead healthier lifestyles. By completing health-related activities and challenges, members earn up to **\$110 in rewards** and increase their chances of winning one of the **\$1,000 quarterly** and **\$5,000 annual cash rewards** in our **Sweepstakes!**



FOCUS Points

Members get a **\$70 reward** and **40 Sweepstakes entries** for completing an individual Personal Health Assessment, annual wellness exam, and preventive screening or flu vaccine.

GET FIT

Members get up to **\$40 in rewards** and **40 Sweepstakes entries** for completing the quarterly step challenges.

Sweepstakes

Members earn entries into the **Sweepstakes** for every activity they complete in **FOCUS_{fwd}**, increasing their chances to win one of the **\$1,000 quarterly** and **\$5,000 annual cash rewards**. Members earn **10 Sweepstakes entries** by simply signing up for **FOCUS_{fwd}**.

Get the **FOCUS_{fwd} App**



Members can stay connected with their health and their rewards with the **FOCUS_{fwd}** app.

To get started, members should access **FOCUS_{fwd}** from their mobile devices. Then, they should select **Learn More** and follow the prompts to download the app and link their accounts.



for downloading the
FOCUS_{fwd} app

Health Management Programs

Our **Great Expectations® for health** programs help educate members about their overall health. We support them as they make healthy lifestyle changes. Whether they are already healthy and active, have a chronic condition, are pregnant, or have serious health challenges, we can help them take charge of their health! Best of all, they can participate in these programs at no cost!

We offer these programs for education and support:

Prevention and Wellness

- Back Care
- Healthy and Active Kids and Teens
- Maternity
- Tobacco Cessation
- Weight Management

Behavioral Health

- Anxiety Management
- Adult Attention-Deficit Hyperactivity Disorder
- Bipolar Support
- Depression
- Moms Support Program
- Recovery Support

Condition Support

- Asthma
- Chronic Obstructive Pulmonary Disease (COPD)
- Chronic Kidney Disease
- Diabetes
- Heart Disease
- Heart Failure
- High Blood Pressure
- High Cholesterol
- Metabolic Health
- Migraine
- NICU Case Management



*for participating
in Great Expectations*

Members with a complex health condition may be contacted to participate in our Case Management program. For a complete description of these Great Expectations programs, visit www.BlueChoiceSC.com/GreatExpectations.

How the Programs Work

After enrolling, members will receive information welcoming them to the program.

My Health Novel

Lifestyle changes and early intervention can reduce risks for chronic health conditions.

Chronic conditions such as diabetes, arthritis and depression are costly in many ways. They pose long-term medical risks and can increase health care costs by thousands of dollars a year. Taking preventive action early can reduce those risks. That's why we are offering My Health Novel.

What is My Health Novel?

It's a virtual network of resources, with optional "chapters" designed to address health concerns that can be challenging and costly: weight management, musculoskeletal issues, behavioral health, women's health and digestive health.



You can visit www.BlueChoiceSC.com/MyHealthNovel or call 866-400-8941 for more information.



My Diabetes Discount Program



It's crucial for people with diabetes to stick to their care plans. But according to our claims data, medication adherence decreases when the copayment for an insulin prescription exceeds \$15.

My Diabetes Discount Program enables members to receive insulin with a \$0 copayment when they meet the requirements listed below:

- Visit their PCP for a checkup that includes:
 - A comprehensive metabolic panel lab test¹ OR a basic metabolic panel.
 - An A1C test every six months.
 - A diabetes risk factor assessment of their feet and eyes.
- Get a flu vaccine.
- Complete approved diabetes education.²

Who Is Eligible?

Members who have Type 1 or Type 2 diabetes and are actively on insulin therapy are eligible for this program.

How It Works:

- BlueChoice will reach out to eligible members each quarter with a detailed checklist of what they need to do to start or continue receiving their \$0 copayment.
- After completing all program requirements, members will begin receiving their \$0 copayment the following quarter.
- Requirements must be maintained on an annual basis to continually receive the \$0 insulin copayment.

¹Members under the age of 18 require a fasting glucose test instead of a comprehensive metabolic panel test.

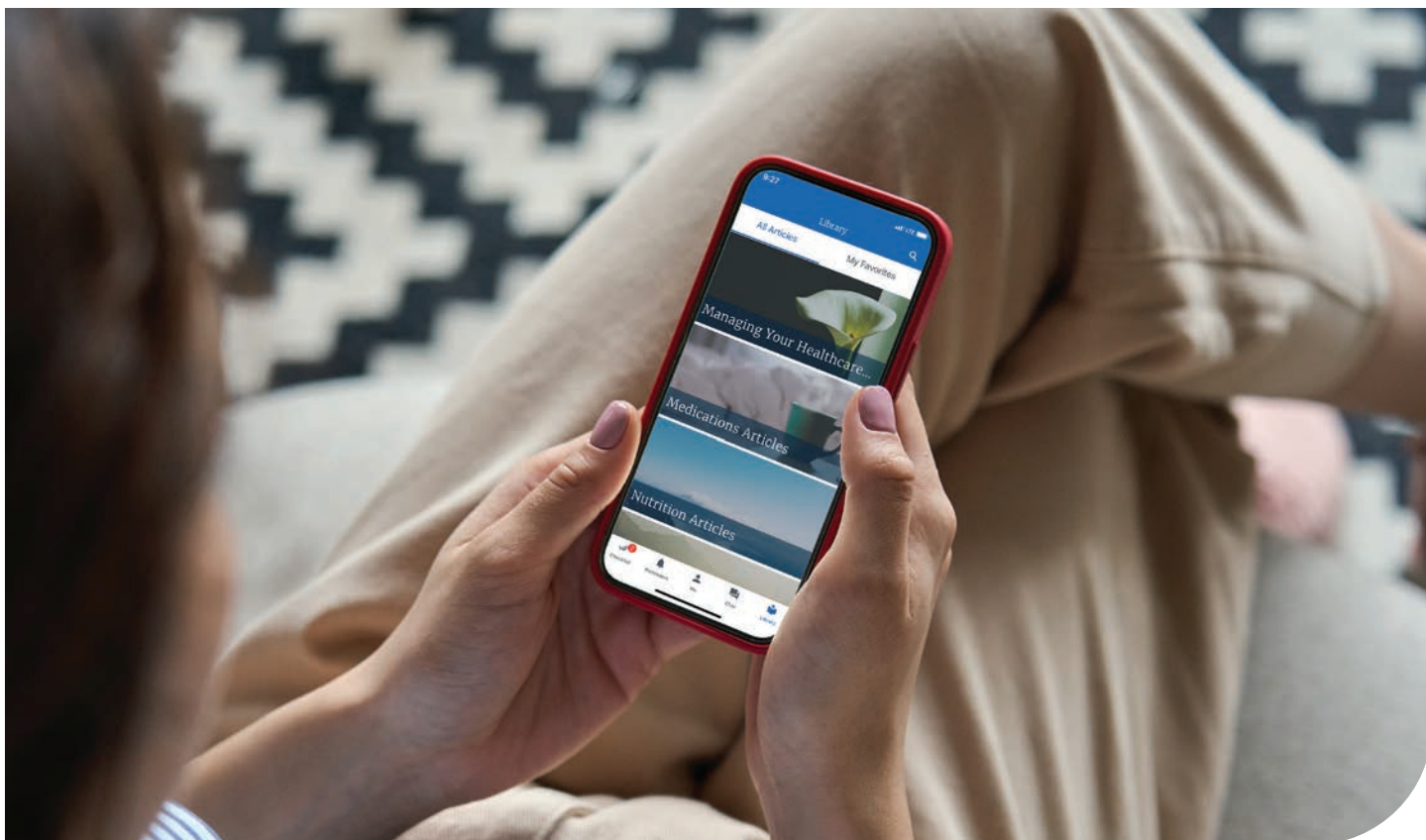
²For members under the age of 18, the parent/guardian must meet the diabetes education requirement.



Learn About Our Behavioral Health Benefits

Few things affect us as much as our mental health. It can influence our self-esteem, work, family life and physical well-being. If you struggle with your mental health, you are not alone. BlueChoice HealthPlan of South Carolina offers a wide range of options that can help. Check out www.BlueChoiceSC.com/BehavioralHealth to learn about our behavioral health benefits.





Members Have Their Very Own Care Team

Members can get support from a care management team made up of real nurses and health workers through the **My Health Planner** app. They can:

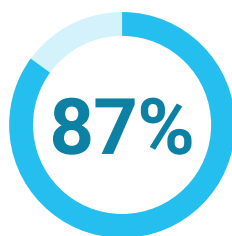
- Get health support at home.
- Have less frustration about managing their health.
- Understand a daily routine to feel their best.
- Track what they do between doctor visits.



4.7/5 stars in the App Store



After completing their My Health Planner program, 92 percent of people felt more in control of their health.



In total, 87 percent of people were satisfied with the My Health Planner program.



Section 4: Tools and Resources

Find Care



Helping your employees find a participating provider is quick and easy! You can download and print customized lists of health care providers and facilities in our network. You can even create directories based on the types of doctors your employees may need. To see if a doctor is in the network, have your employees visit www.BlueChoiceSC.com/FindCare.

Information on the Web

When members need to download forms, learn specifics about our health plans, send us emails, review the Prescription Drug List or read about our wellness programs, they can visit www.BlueChoiceSC.com. Our website is a protected, secure and convenient way to access information on their schedules.

My Health Toolkit®



Members can use My Health Toolkit to see if their plan covers a specific procedure, get more information about their health benefits, check the status of a claim and more.

My Health Toolkit Mobile App



With the My Health Toolkit mobile app, our members' insurance benefits are with them wherever they go!

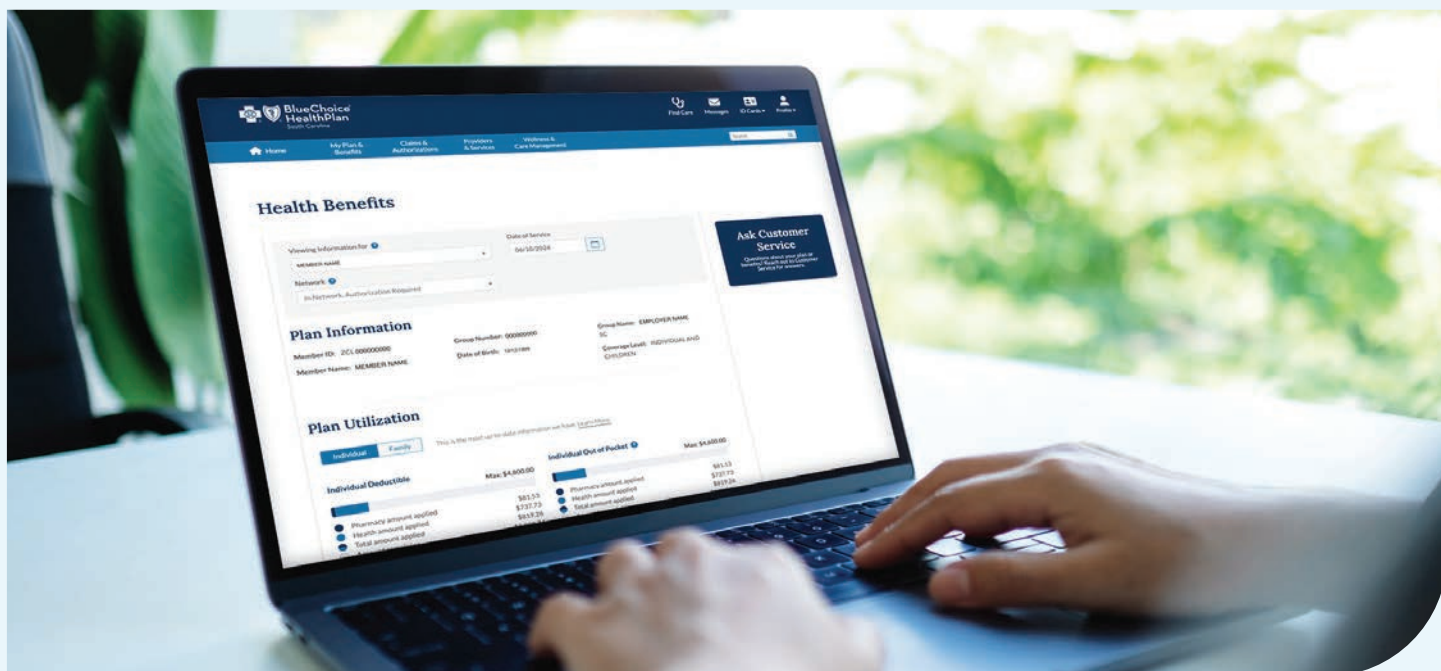
With the app, they can:

- View and share their digital ID cards.
- Quickly check the status of their claims.
- See what their health plan covers.
- Find an in-network doctor or hospital.
- Update their contact information.
- Update their other health insurance information.
- Check the status of prior authorizations.



for registering for
My Health Toolkit

Current My Health Toolkit users can log in to the app with their existing usernames and passwords. New My Health Toolkit users can register through the app. The My Health Toolkit app is available on the App Store or Google Play.





Telehealth Visits as Low as \$0*

Lots of BlueChoice HealthPlan members have discovered the convenience and cost savings of telehealth. Members can avoid long waits and high costs to get treatment for many health problems with Blue CareOnDemand. In their virtual visits, members see licensed providers who also can send a prescription to their pharmacy if needed.



Powered by **MDLIVE**

Four Categories of Care:

- **Virtual primary care** for routine checkups, wellness screenings and health monitoring
- **Urgent care** for things like allergies, cold and flu, COVID-19, sore throat, and urinary tract infections
- **Behavioral health** to connect one-on-one with a therapist on issues like anxiety and depression
- **Dermatology** for consultation on lower-risk conditions affecting skin, hair and nails, such as acne, rosacea and eczema

Members access and register for Blue CareOnDemand through My Health Toolkit.

*Members enrolled in the Gold 5225, Silver 8250 and Bronze 4000 plans do not have a copay for Blue CareOnDemand visits.

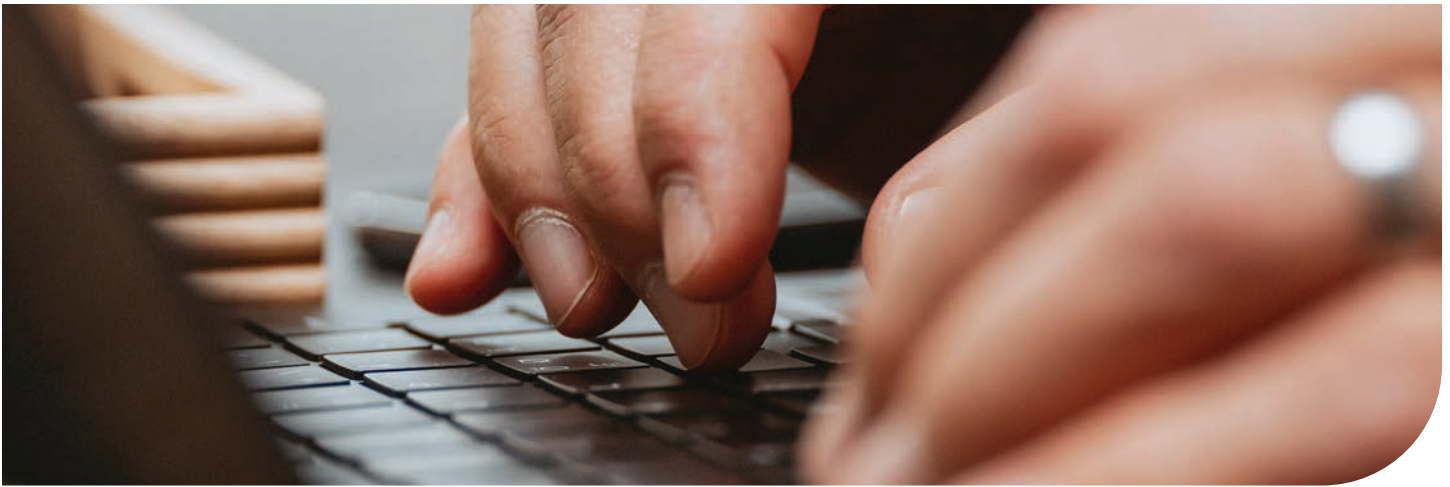
Members enrolled in high-deductible health plans must meet any deductible and coinsurance requirements.

Copyright © 2024 BlueChoice HealthPlan of South Carolina. MDLIVE is an independent company that provides a telehealth platform on behalf of BlueChoice.

Copyright © 2024 MDLIVE Inc. MDLIVE and the MDLIVE logo are registered trademarks of MDLIVE Inc.

Blue CareOnDemand is not a replacement for your primary care doctor. You should continue scheduling office visits for regular checkups and preventive care.

For true emergencies and life-threatening issues, go to the emergency room or call 911. The cost of Blue CareOnDemand visits varies by visit type and provider selected and is subject to plan benefits.



Save Time and Money

It's the little extras that make a big difference. Check out these optional services.



QuickBill

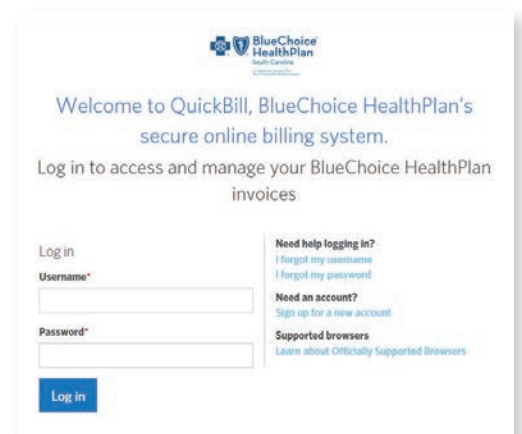
QuickBill is an electronic benefit service that allows you to view and pay your invoices online 24/7.

Bill Presentation

View your invoices directly via the internet 24/7. New invoice notifications are sent to you via email. Simply log in to *QuickBill* to view, print, export or create detailed reports.

Bill Payment

Pay invoices via a one-time electronic funds transfer (EFT), establish a recurring credit card payment, or establish a recurring bank draft from one of your corporate bank accounts. *QuickBill* offers a quick, easy and secure online payment experience. Reduce the number of lost checks and invoices and decrease postage and check production costs.



Online Eligibility Systems — *QuickEnroll* and *ChoiceEnroll*

QuickEnroll is the group online enrollment and benefits administration platform, while *ChoiceEnroll* is the platform agents use to manage all their BlueChoice small groups.

QuickEnroll replaces time-consuming, expensive and paper-based benefit enrollment with a comprehensive electronic benefit administration and enrollment solution. It's secure, online and paper free! Call your agent or marketing representative to get started.

ChoiceEnroll eliminates paper by allowing enrollments, changes and terminations to be processed securely online. There's no software to download, and best of all, this service is free. Agents can manage transactions and requests such as annual enrollments, terminations, qualifying life events and more. All transactions are processed in five minutes or less per event.



HRA/HSA/FSA/COBRA

We have health reimbursement accounts (HRAs), health savings accounts (HSAs), flexible spending accounts (FSAs) and COBRA administration solutions. With BlueChoice, you have the flexibility of choosing the vendor to meet your needs. We can discuss which of our partners can help you accomplish your goals.

Section 5: Optional Coverage Enhancements



Start Smiling!

Blue DentalSM



Taking care of your teeth isn't just about having a nice smile and pleasant breath. Research has found a number of links between oral health and overall health. The condition of your mouth is closely tied to your overall physical health.

With Blue Dental coverage, your employees have access to dental locations in South Carolina and nationally.

Using an In-Network Dentist

Members are not required to see an in-network dentist. But if they do, they won't have to pay any additional cost above the agreed-upon fees.

In addition, an in-network dentist will file their claims.

Members may have to file their own claims with an out-of-network dentist. They can get a claim form at www.BlueChoiceSC.com in the Find a Form section.

Dental ID Card

When going to the dentist, members should present their dental ID card to make sure the dentist applies their benefits correctly. Their dentist can easily verify coverage by calling the Member Services number on the back of their dental ID card.

Treatment Estimates

We recommend members have their dentist submit a request for a pretreatment estimate for services that are more than \$300. The dentist can send an undated claim form and treatment plan to P.O. Box 100300, Columbia, South Carolina 29202, or fax them to 803-264-7629. We will send a pretreatment estimate to the member and their dentist that details what services their plan will cover and how much it will pay.

Locating a Dentist

To find an in-network dentist, visit www.BlueChoiceSC.com/FindCare.

Companion Life Insurance Company



Companion Life offers an array of innovative and competitive employee benefit plans. Because Companion Life is a separate company from BlueChoice, Companion Life will be responsible for all services related to these insurance products. Companion Life specializes in group life and disability income insurance programs with a variety of features and plan design options. Companion Life's insurance plans may be offered on a voluntary or group basis.

Life Insurance

Group term life insurance products can be offered as a flat amount or multiple of salaries up to \$500,000, with accidental death and dismemberment included. Guaranteed issue amounts are available.

Short- and Long-Term Disability Insurance

Short-term disability insurance offers a wide selection of benefit percentages, waiting periods, benefit maximums and payment durations up to one year. Partial disability insurance is also available. Companion Life offers small group short-term disability insurance benefits down to two lives, with no pre-existing limitations on employer-paid insurance plans.

Long-term disability insurance provides choices for benefit payment maximums, elimination periods and benefit duration periods. Companion Life's insurance plans include updated definitions of a disability and an amended definition of own occupation.

Voluntary Vision Insurance

Our small group insurance plans include routine vision. If you prefer, you may also offer your employees vision insurance through Companion Life. To offer this service, two participants are required. Your employees will have access to a national network of providers. You have the choice of three plans: exam only, materials only or exam and materials.





Section 6: 2025 Plans

Choice Complete

2025 Choice Complete

BENEFIT FEATURE AND DESCRIPTION	GOLD 1001	GOLD 1502
Coinsurance	30%	35%
Deductible (Single/Family) ¹	\$1,000/\$2,000	\$1,500/\$3,000
Maximum Out of Pocket (MOOP) (Single/Family) ¹	\$6,000/\$12,000	\$5,000/\$10,000
Annual Dollar Limits/Lifetime Maximum	Unlimited	Unlimited
Preventive Care/Screenings/Immunizations, Including Lactation Support ²	\$0	\$0
Primary Care Physician (PCP) Office Visits	\$20	\$15
Blue CareOnDemand Powered by MDLIVE	\$10	\$8
Specialists Office Visits	\$50	\$50
Urgent Care This includes in-network and out-of-network emergency services for an emergency medical condition.	\$50	\$50
Emergency Room In-Network and Out-Of-Network For emergency room care to be covered, care must be for an emergency medical condition.	\$250 copayment, then 30% after deductible	\$250 copayment, then 35% after deductible
Free-Standing Ambulatory Surgical Center³ This includes services provided by an out-of-network provider at an in-network free-standing ambulatory surgical center.	\$200 per visit	\$200 per visit
Inpatient Physicians and Surgical Services⁴	30% after deductible	35% after deductible
Inpatient Hospital Services, Including Behavioral Health⁴	30% after deductible	35% after deductible
Outpatient Surgery Services	30% after deductible	35% after deductible
Outpatient Facility Fee, Including Behavioral Health⁴	30% after deductible	35% after deductible
Chiropractic Care⁵	30% after deductible	35% after deductible
Pharmacy Retail⁶ Copayments reflect a 31-day supply. Members can purchase a 90-day supply for three times the cost.	Tier 0: \$0 Tier 1: \$23 Tier 2: \$38 Tier 3: \$70 Tier 4: \$250 Tier 5: \$250 Tier 6: \$250	Tier 0: \$0 Tier 1: \$20 Tier 2: \$35 Tier 3: \$70 Tier 4: \$250 Tier 5: \$250 Tier 6: \$250
Mail Order⁶ Generic and brand-name drugs are available for a 90-day supply through the mail-order program.	Tier 0: \$0 Tier 1: \$46 Tier 2: \$76 Tier 3: \$140 Tier 4: \$500 Tier 5: \$500 Tier 6: \$500	Tier 0: \$0 Tier 1: \$40 Tier 2: \$70 Tier 3: \$140 Tier 4: \$500 Tier 5: \$500 Tier 6: \$500

GOLD 2000	GOLD 2503	GOLD 2750	NEW — GOLD 3500	GOLD 5225
50%	30%	25%	20%	0%
\$2,000/\$4,000	\$2,500/\$5,000	\$2,750/\$5,500	\$3,500/\$7,000	\$5,225/\$10,450
\$5,000/\$10,000	\$4,000/\$8,000	\$7,500/\$15,000	\$6,000/\$12,000	\$5,225/\$10,450
Unlimited	Unlimited	Unlimited	Unlimited	Unlimited
\$0	\$0	\$0	\$0	\$0
\$25	\$35	\$15	\$15	\$0
\$13	\$18	\$10	\$10	\$0
\$50	\$60	\$50	\$35	\$50
\$50	\$50	\$50	\$50	\$50
\$250 copayment, then 50% after deductible	\$250 copayment, then 30% after deductible	25% after deductible	\$200 copayment, then 20% after deductible	Deductible
\$200 per visit	\$200 per visit	\$200 per visit	\$200 per visit	\$200 per visit
50% after deductible	30% after deductible	25% after deductible	20% after deductible	Deductible
50% after deductible	30% after deductible	25% after deductible	20% after deductible	Deductible
50% after deductible	30% after deductible	25% after deductible	20% after deductible	Deductible
50% after deductible	30% after deductible	25% after deductible	20% after deductible	Deductible
50% after deductible	30% after deductible	25% after deductible	20% after deductible	Deductible
Tier 0: \$0 Tier 1: \$18 Tier 2: \$35 Tier 3: \$70 Tier 4: \$250 Tier 5: \$250 Tier 6: \$250	Tier 0: \$0 Tier 1: \$20 Tier 2: \$38 Tier 3: \$70 Tier 4: \$250 Tier 5: \$250 Tier 6: \$250	Tier 0: \$0 Tier 1: \$10 Tier 2: \$30 Tier 3: \$65 Tier 4: \$250 Tier 5: \$250 Tier 6: \$250	Tier 0: \$0 Tier 1: \$10 Tier 2: \$10 Tier 3: \$20 Tier 4: \$150 Tier 5: \$150 Tier 6: \$150	Tier 0: \$0 Tier 1: \$10 Tier 2: \$35 Tier 3: \$65 Tier 4: \$250 Tier 5: \$250 Tier 6: \$250
Tier 0: \$0 Tier 1: \$36 Tier 2: \$70 Tier 3: \$140 Tier 4: \$500 Tier 5: \$500 Tier 6: \$500	Tier 0: \$0 Tier 1: \$40 Tier 2: \$76 Tier 3: \$140 Tier 4: \$500 Tier 5: \$500 Tier 6: \$500	Tier 0: \$0 Tier 1: \$20 Tier 2: \$60 Tier 3: \$130 Tier 4: \$500 Tier 5: \$500 Tier 6: \$500	Tier 0: \$0 Tier 1: \$20 Tier 2: \$20 Tier 3: \$40 Tier 4: \$300 Tier 5: \$300 Tier 6: \$300	Tier 0: \$0 Tier 1: \$20 Tier 2: \$70 Tier 3: \$130 Tier 4: \$500 Tier 5: \$500 Tier 6: \$500

2025 Choice Complete

BENEFIT FEATURE AND DESCRIPTION	SILVER 2500	SILVER 2950
Coinsurance	50%	40%
Deductible (Single/Family) ¹	\$2,500/\$5,000	\$2,950/\$5,900
Maximum Out of Pocket (MOOP) (Single/Family) ¹	\$7,500/\$15,000	\$8,700/\$17,400
Annual Dollar Limits/Lifetime Maximum	Unlimited	Unlimited
Preventive Care/Screenings/Immunizations, Including Lactation Support ²	\$0	\$0
Primary Care Physician (PCP) Office Visits	\$45	\$35
Blue CareOnDemand Powered by MDLIVE	\$23	\$18
Specialists Office Visits	\$85	\$70
Urgent Care This includes in-network and out-of-network emergency services for an emergency medical condition.	\$50	\$50
Emergency Room In-Network and Out-Of-Network For emergency room care to be covered, care must be for an emergency medical condition.	\$250 copayment, then 50% after deductible	\$350 copayment, then 40% after deductible
Free-Standing Ambulatory Surgical Center³ This includes services provided by an out-of-network provider at an in-network free-standing ambulatory surgical center.	\$200 per visit	\$200 per visit
Inpatient Physicians and Surgical Services⁴	50% after deductible	40% after deductible
Inpatient Hospital Services, Including Behavioral Health⁴	50% after deductible	40% after deductible
Outpatient Surgery Services	\$100 copayment, then 50% after deductible	\$350 copayment, then 40% after deductible
Outpatient Facility Fee, Including Behavioral Health⁴	50% after deductible	40% after deductible
Chiropractic Care⁵	50% after deductible	40% after deductible
Pharmacy Retail⁶ Copayments reflect a 31-day supply. Members can purchase a 90-day supply for three times the cost.	Tier 0: \$0 Tier 1: \$25 Tier 2 – Tier 6: 50% after deductible	Tier 0: \$0 Tier 1: \$30 Tier 2: \$45 Tier 3: \$80 Tier 4: \$300 Tier 5: \$300 Tier 6: \$300
Mail Order⁶ Generic and brand-name drugs are available for a 90-day supply through the mail-order program.	Tier 0: \$0 Tier 1: \$50 Tier 2 – Tier 6: 50% after deductible	Tier 0: \$0 Tier 1: \$60 Tier 2: \$90 Tier 3: \$160 Tier 4: \$600 Tier 5: \$600 Tier 6: \$600

SILVER 3500	SILVER 4000	SILVER 5001	NEW — SILVER 6500
50%	50%	35%	25%
\$3,500/\$7,000	\$4,000/\$8,000	\$5,000/\$10,000	\$6,500/\$13,000
\$8,600/\$17,200	\$8,800/\$17,600	\$8,500/\$17,000	\$8,900/\$17,800
Unlimited	Unlimited	Unlimited	Unlimited
\$0	\$0	\$0	\$0
\$45	\$40	\$40	\$35
\$23	\$20	\$20	\$13
\$90	\$80	\$80	\$80
\$50	\$50	\$50	\$50
\$300 copayment, then 50% after deductible	\$300 copayment, then 50% after deductible	\$400 copayment, then 35% after deductible	\$250 copayment, then 25% after deductible
\$200 per visit	\$200 per visit	\$200 per visit	\$200 per visit
50% after deductible	50% after deductible	35% after deductible	25% after deductible
50% after deductible	50% after deductible	35% after deductible	25% after deductible
\$300 copayment, then 50% after deductible	\$100 copayment, then 50% after deductible	\$100 copayment, then 35% after deductible	\$150 copayment, then 25% after deductible
50% after deductible	50% after deductible	35% after deductible	25% after deductible
50% after deductible	50% after deductible	35% after deductible	25% after deductible
Tier 0: \$0 Tier 1: \$35 Tier 2: \$50 Tier 3: \$90 Tier 4: \$300 Tier 5: \$300 Tier 6: \$300	Tier 0: \$0 Tier 1: \$25 Tier 2: \$60 Tier 3: \$90 Tier 4: \$300 Tier 5: \$300 Tier 6: \$300	Tier 0: \$0 Tier 1: \$25 Tier 2: \$40 Tier 3: \$80 Tier 4: \$300 Tier 5: \$300 Tier 6: \$300	Tier 0: \$0 Tier 1: \$25 Tier 2: 25% after deductible Tier 3: 25% after deductible Tier 4: 25% after deductible Tier 5: 25% after deductible Tier 6: 25% after deductible
Tier 0: \$0 Tier 1: \$70 Tier 2: \$100 Tier 3: \$180 Tier 4: \$600 Tier 5: \$600 Tier 6: \$600	Tier 0: \$0 Tier 1: \$50 Tier 2: \$120 Tier 3: \$180 Tier 4: \$600 Tier 5: \$600 Tier 6: \$600	Tier 0: \$0 Tier 1: \$50 Tier 2: \$80 Tier 3: \$160 Tier 4: \$600 Tier 5: \$600 Tier 6: \$600	Tier 0: \$0 Tier 1: \$50 Tier 2: 25% after deductible Tier 3: 25% after deductible Tier 4: 25% after deductible Tier 5: 25% after deductible Tier 6: 25% after deductible

2025 Choice Complete

BENEFIT FEATURE AND DESCRIPTION	SILVER 7100	SILVER 8250
Coinsurance	20%	0%
Deductible (Single/Family) ¹	\$7,100/\$14,200	\$8,250/\$16,500
Maximum Out of Pocket (MOOP) (Single/Family) ¹	\$9,000/\$18,000	\$8,250/\$16,500
Annual Dollar Limits/Lifetime Maximum	Unlimited	Unlimited
Preventive Care/Screenings/Immunizations, Including Lactation Support ²	\$0	\$0
Primary Care Physician (PCP) Office Visits	\$25	\$0
Blue CareOnDemand Powered by MDLIVE	\$13	\$0
Specialists Office Visits	\$75	\$85
Urgent Care This includes in-network and out-of-network emergency services for an emergency medical condition.	\$50	\$50
Emergency Room In-Network and Out-Of-Network For emergency room care to be covered, care must be for an emergency medical condition.	\$300 copayment, then 20% after deductible	\$200 copayment, then deductible
Free-Standing Ambulatory Surgical Center³ This includes services provided by an out-of-network provider at an in-network free-standing ambulatory surgical center.	\$200 per visit	\$200 per visit
Inpatient Physicians and Surgical Services⁴	20% after deductible	Deductible
Inpatient Hospital Services, Including Behavioral Health⁴	20% after deductible	Deductible
Outpatient Surgery Services	20% after deductible	Deductible
Outpatient Facility Fee, Including Behavioral Health⁴	20% after deductible	Deductible
Chiropractic Care⁵	20% after deductible	Deductible
Pharmacy Retail⁶ Copayments reflect a 31-day supply. Members can purchase a 90-day supply for three times the cost.	Tier 0: \$0 Tier 1: \$25 Tier 2: \$35 Tier 3 – Tier 6: 20% after deductible	Tier 0: \$0 Tier 1: \$32 Tier 2: \$65 Tier 3: \$75 Tier 4: \$300 Tier 5: \$300 Tier 6: \$300
Mail Order⁶ Generic and brand-name drugs are available for a 90-day supply through the mail-order program.	Tier 0: \$0 Tier 1: \$50 Tier 2: \$70 Tier 3 – Tier 6: 20% after deductible	Tier 0: \$0 Tier 1: \$64 Tier 2: \$130 Tier 3: \$150 Tier 4: \$600 Tier 5: \$600 Tier 6: \$600

BRONZE 4000	BRONZE 5550	BRONZE 6900	BRONZE 9200
50%	40%	20%	0%
\$4,000/\$8,000	\$5,550/\$11,100	\$6,900/\$13,800	\$9,200/\$18,400
\$9,000/\$18,000	\$9,200/\$18,400	\$9,200/\$18,400	\$9,200/\$18,400
Unlimited	Unlimited	Unlimited	Unlimited
\$0	\$0	\$0	\$0
50% after deductible	\$55	\$60	\$60
\$0	\$28	\$30	\$35
50% after deductible	\$120	\$100	\$120
50% after deductible	\$75	\$75	\$75
\$300 copayment, then 50% after deductible	\$150 copayment, then 40% after deductible	\$150 copayment, then 20% after deductible	\$400 copayment, then deductible
\$200 per visit	\$200 per visit	\$200 per visit	\$200 per visit
50% after deductible	40% after deductible	20% after deductible	Deductible
50% after deductible	40% after deductible	20% after deductible	Deductible
\$300 copayment, then 50% after deductible	\$150 copayment, then 40% after deductible	\$150 copayment, then 20% after deductible	Deductible
50% after deductible	40% after deductible	20% after deductible	Deductible
50% after deductible	40% after deductible	20% after deductible	Deductible
Tier 0: \$0 Tier 1: \$25 Tier 2: \$45 Tier 3: \$125 Tier 4: \$350 Tier 5: \$350 Tier 6: \$350	Tier 0: \$0 Tier 1: \$30 Tier 2 – Tier 6: 40% after deductible	Tier 0: \$0 Tier 1: \$32 Tier 2 – Tier 6: 20% after deductible	Tier 0: \$0 Tier 1: \$30 Tier 2: \$120 Tier 3: \$200 Tier 4: \$335 Tier 5: \$335 Tier 6: \$335
Tier 0: \$0 Tier 1: \$50 Tier 2: \$90 Tier 3: \$250 Tier 4: \$700 Tier 5: \$700 Tier 6: \$700	Tier 0: \$0 Tier 1: \$60 Tier 2 – Tier 6: 40% after deductible	Tier 0: \$0 Tier 1: \$64 Tier 2 – Tier 6: 20% after deductible	Tier 0: \$0 Tier 1: \$60 Tier 2: \$240 Tier 3: \$400 Tier 4: \$670 Tier 5: \$670 Tier 6: \$670

2025 Choice Complete

BENEFIT FEATURE AND DESCRIPTION	GOLD 3300 HD	SILVER 5100 HD
Coinsurance	0%	0%
Deductible (Single/Family) ¹	\$3,300/\$6,600	\$5,100/\$10,200
Maximum Out of Pocket (MOOP) (Single/Family) ¹	\$3,300/\$6,600	\$5,100/\$10,200
Annual Dollar Limits/Lifetime Maximum	Unlimited	Unlimited
Preventive Care/Screenings/Immunizations, Including Lactation Support ²	\$0	\$0
Primary Care Physician (PCP) Office Visits	Deductible	Deductible
Blue CareOnDemand Powered by MDLIVE	Deductible	Deductible
Specialists Office Visits	Deductible	Deductible
Urgent Care This includes in-network and out-of-network emergency services for an emergency medical condition.	Deductible	Deductible
Emergency Room In-Network and Out-Of-Network For emergency room care to be covered, care must be for an emergency medical condition.	Deductible	Deductible
Free-Standing Ambulatory Surgical Center³ This includes services provided by an out-of-network provider at an in-network free-standing ambulatory surgical center.	Deductible	Deductible
Inpatient Physicians and Surgical Services ⁴	Deductible	Deductible
Inpatient Hospital Services, Including Behavioral Health ⁴	Deductible	Deductible
Outpatient Surgery Services	Deductible	Deductible
Outpatient Facility Fee, Including Behavioral Health ⁴	Deductible	Deductible
Chiropractic Care ⁵	Deductible	Deductible
Pharmacy Retail⁶ Copayments reflect a 31-day supply. Members can purchase a 90-day supply for three times the cost.	Tier 0: \$0 Tier 1 – Tier 6: Deductible	Tier 0: \$0 Tier 1 – Tier 6: Deductible
Mail Order⁶ Generic and brand-name drugs are available for a 90-day supply through the mail-order program.	Tier 0: \$0 Tier 1 – Tier 6: Deductible	Tier 0: \$0 Tier 1 – Tier 6: Deductible



Statement of Confidentiality



BlueChoice knows how important it is to protect the privacy of each member's confidential medical information. Here are the efforts we make to protect the privacy of our members.

Protection of Privacy

BlueChoice keeps all medical information about a member strictly confidential. BlueChoice has administrative, technical and physical safeguards in place to protect the privacy of members' personal health information. Our information systems have advanced security that limits access to personal health information to authorized personnel only. We require all staff to keep confidential any personal health information they learn in performing their jobs. Additionally, staff is required to limit requests to external entities for a member's personal health information to the minimum necessary for their intended purpose.

BlueChoice requires all physicians and other health care professionals in our provider network to maintain the confidentiality of their patients' health information, and they must guard against unauthorized or inadvertent disclosure of this confidential information. Through on-site visits, BlueChoice reviews each provider's privacy policies and methods for storing and protecting patients' medical records.

BlueChoice requires all business associates, consultants and other entities with whom we contract for clinical or administrative services to maintain such confidentiality and to have a privacy policy in place that protects against unauthorized use or disclosure of confidential information. All such entities must sign an agreement attesting to the fact that they are compliant with federal privacy regulations.

Collection, Use and Disclosure of Medical Information

BlueChoice may use and disclose medical information about your employees for the purposes of treatment, payment and health care operations. Examples of these routine activities that involve the collection, use and disclosure of health information include getting information from health care providers to determine medical necessity, processing claims, issuing Explanations of Benefits to policyholders and conducting quality improvement activities.

If there is a need to release member-identifiable information for purposes other than those approved by law for treatment, payment and health care operations, BlueChoice must first get a written authorization form signed by the member. The authorization form allows the member to specify what information BlueChoice is authorized to release, to whom it may be released and for what purpose.

Focus on life. Focus on health. *Stay focused.*

Non-Discrimination Statement and Foreign Language Access

We do not discriminate on the basis of race, color, national origin, disability, age, sex, gender identity, sexual orientation or health status in our health plans, when we enroll members or provide benefits.

If you or someone you're assisting is disabled and needs interpretation assistance, help is available at the contact number posted on our website or listed in the materials included with this notice (TDD: 711).

Free language interpretation support is available for those who cannot read or speak English by calling one of the appropriate numbers listed below.

If you think we have not provided these services or have discriminated in any way, you can file a grievance by emailing contact@hcrcompliance.com or by calling our Compliance area at 1-800-832-9686 or the U.S. Department of Health and Human Services, Office for Civil Rights at 1-800-368-1019 or 1-800-537-7697 (TDD).

Si usted, o alguien a quien usted está ayudando, tiene preguntas acerca de este plan de salud, tiene derecho a obtener ayuda e información en su idioma sin costo alguno. Para hablar con un intérprete, llame al 1-844-396-0183. (Spanish)

如果您，或是您正在協助的對象，有關於本健康計畫方面的問題，您有權利免費以您的母語得到幫助和訊息。洽詢一位翻譯員，請撥 1-844-396-0188。(Chinese)

Nếu quý vị, hoặc là người mà quý vị đang giúp đỡ, có những câu hỏi quan tâm về chương trình sức khỏe này, quý vị sẽ được giúp đỡ với các thông tin bằng ngôn ngữ của quý vị miễn phí. Để nói chuyện với một thông dịch viên, xin gọi 1-844-389-4838 (Vietnamese)

이 건강보험에 관하여 궁금한 사항 혹은 질문이 있으시면 1-844-396-0187로 연락해 주십시오. 귀하의 비용 부담없이 한국어로 도와드립니다. (Korean)

Kung ikaw, o ang iyong tinutulungan, ay may mga katanungan tungkol sa planong pangkalusugang ito, may karapatan ka na makakuha ng tulong at impormasyon sa iyong wika nang walang gastos. Upang makausap ang isang tagasalín, tumawag sa 1-844-389-4839. (Tagalog)

Если у Вас или лица, которому вы помогаете, имеются вопросы по поводу Вашего плана медицинского обслуживания, то Вы имеете право на бесплатное получение помощи и информации на русском языке. Для разговора с переводчиком позвоните по телефону 1-844-389-4840. (Russian)

إن كان لديك أو لدى شخص تساعدك أسئلة بخصوص خطة الصحة هذه، فلديك الحق في الحصول على المساعدة والمعلومات الضرورية بلغتك من دون أية تكلفة. للتحدث مع مترجم اتصل ب 1-844-396-0189 (Arabic)

Si ou menm oswa yon moun w ap ede gen kesyon konsènan plan sante sa a, se dwa w pou resevwa asistans ak enfòmasyon nan lang ou pale a, san ou pa gen pou peye pou sa. Pou pale avèk yon entèprèt, rele nan 1-844-398-6232. (French/Haitian Creole)

Si vous, ou quelqu'un que vous êtes en train d'aider, avez des questions à propos de ce plan médical, vous avez le droit d'obtenir gratuitement de l'aide et des informations dans votre langue. Pour parler à un interprète, appelez le 1-844-396-0190. (French)

Jeśli Ty lub osoba, której pomagasz, macie pytania odnośnie planu ubezpieczenia zdrowotnego, masz prawo do uzyskania bezpłatnej informacji i pomocy we własnym języku. Aby porozmawiać z tłumaczem, zadzwoń pod numer 1-844-396-0186. (Polish)

Se você, ou alguém a quem você está ajudando, tem perguntas sobre este plano de saúde, você tem o direito de obter ajuda e informação em seu idioma e sem custos. Para falar com um intérprete, ligue para 1-844-396-0182. (Portuguese)

Se tu o qualcuno che stai aiutando avete domande su questo piano sanitario, hai il diritto di ottenere aiuto e informazioni nella tua lingua gratuitamente. Per parlare con un interprete, puoi chiamare 1-844-396-0184. (Italian)

あなた、またはあなたがお世話をされている方が、この健康保険についてご質問がございましたら、ご希望の言語でサポートを受けたり、情報を入手したりすることができます。料金はかかりません。通訳とお話される場合、1-844-396-0185 までお電話ください。 (Japanese)

Falls Sie oder jemand, dem Sie helfen, Fragen zu diesem Krankenversicherungsplan haben bzw. hat, haben Sie das Recht, kostenlose Hilfe und Informationen in Ihrer Sprache zu erhalten. Um mit einem Dolmetscher zu sprechen, rufen Sie bitte die Nummer 1-844-396-0191 an. (German)

اگر شما یا فردی که به او کمک می کنید سؤالاتی در باره ی این برنامه ی بهداشتی داشته باشید، حق این را دارید که کمک و اطلاعات به زبان خود را به طور رایگان دریافت کنید. برای صحبت کردن با مترجم، لطفاً با شماره ی 1-844-398-6233 تماس حاصل نمایید. (Persian-Farsi)

Ni da doodago t'áá háída biká'aná nílwo'ígíí díí Béeso Ách'ááh naa'nilígi háá'ída yí na' ídíł kidgo, nihá'áhóót'i' nihí ká'a'doo wołgo kwii ha'át'ishíí bí na'ídołkidígi doo bik'é'azláagóó. Ata' halne'é ła' bich'í' ha desdzh níningo, koji' béesh bee hólne' 1-844-516-6328. (Navajo)

Vann du adda ebbah es du am helfa bisht, ennichi questions hend veyyich *deah health plan*, hend diah's recht fa hilf un information greeya in eiyah aykni shprohch unni kosht. Fa shvetza mitt en interpreter, roof deah nummah oh 1-833-584-1829. (Pennsylvania Dutch)

As your health plan, we're here to help you. If you need more information, assistance or have other questions, please:



Visit our website:
www.BlueChoiceSC.com



Write to us:
BlueChoice HealthPlan
Member Services
PO Box 6170
Columbia, SC 29260-6170



Call Monday – Friday
from 8:30 a.m. – 5 p.m.:
800-868-2528
TTY Services: 711 + 800-868-2528

If you need an interpreter, we have free services available for both oral and written assistance. If you have questions about your coverage, please contact Member Services for more information. We do not discriminate on the basis of race, color, national origin, disability, age, sex, gender identity, sexual orientation or health status in our health plans when we enroll members or provide benefits.

Focus on life. Focus on health. *Stay focused.*



BlueChoice HealthPlan is an independent licensee
of the Blue Cross Blue Shield Association.

www.BlueChoiceSC.com